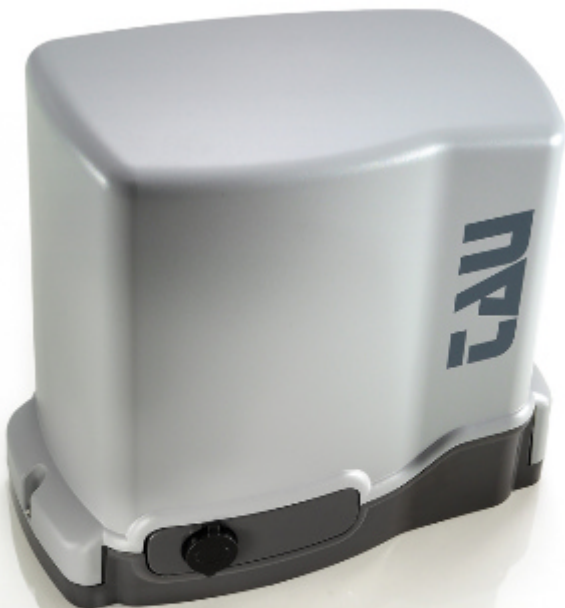


18V Residential Sliding Gate Drive

350T-ONE5B

TAU S.r.l. 18Vdc Gearmotor Sliding Gate Drive (230Vac powered) with optical encoder,
built-in 350K125M control panel, with battery charger.

Suited to Ground Track gates running near level



- intensive use - 100% duty cycle when connected to 230Vac power source
 - operating speed - 233 mm/sec
 - for Ground Track gates up to 600 kgs
 - low voltage DC Gate Drive
 - optical encoder technology
 - control board protected within a plastic enclosure
 - built-in 2 channel 433.92 MHz rolling-code radio receiver
 - built-in 12V dc battery charger for battery back-up
 - soft start and soft stop
 - obstacle detection and crush prevention
 - practical manual release with personal key
 - ingress protection IP54
 - **Solar Power capable** with Photovoltaic (PV) Technology *
- * See Installation Manual for speed on Battery Power

Technical features	350T-ONE5B
Power supply (to control unit)	230 V AC (50 - 60 Hz)
Motor power supply	18 V DC
Motor Absorption (no load)	1.05 A
Absorbed power	250 W
Max. operating speed	233mm/sec
Duty cycle	100 %
Max. thrust	980 N
Operating temperature	-20° C - +55° C
Degree of protection	IP 54
Max. gate leaf weight	600 kg
Pinion module	Module 4

GATE DRIVE SOLUTIONS
The Driving Force Behind Your Gate

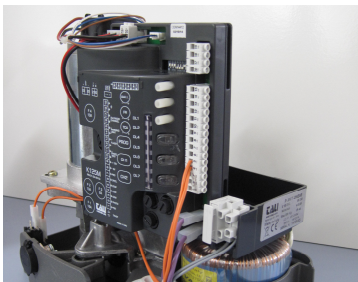
GATE DRIVE SOLUTIONS LTD.

Phone 09 419 5483

www.gatedrivesolutions.nz

Additional Product

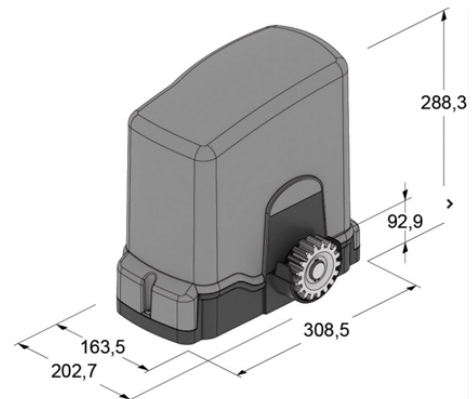
	400CPOR Mounting Plate with U Bolts		550CPMR Adjustable Mounting Plate
	Sliding Gate Nylon Rack Steel core, fibreglass reinforced, 22 x 22mm. 1 metre lengths. (Module 4, Max. weight 800 kg)		BS-400 Barrier-Curtain Sensor - outdoor 12 m, 30 m sensing range
	900OPTIC Set of Safety Photocells Beam alignment adjustable up to 15°, 20 to 40 m range		900FOTEC Set of Safety Photocells Beam alignment adjustable up to 5° vertically, 180° horizontally, 10 m range
	ULD911 / ULD913 Single Channel 12/24V ac/dc or 230Vac plug-in, vehicle inductive Loop Detector with base. N.O. /N.C. relay output.		ULD921 / ULD923 Dual Channel 12/24V ac/dc or 230Vac plug-in, vehicle inductive Loop Detector with base. Directional Control Logic capable.



Protected control board -
within a plastic enclosure



Practical manual release -
protected by a personal key



SAFETY FIRST OF ALL

The EN logo indicates that the Gate Drive has been tested in accordance with EN 12445/EN 23453 (Safety in use of power operated doors).

PLEASE NOTE: The specifications and suggested gate sizes will vary depending upon other variables such as friction of wheels; environmental factors e.g. wind loading, type of cladding and external influences which may assist or degrade the recommended gate sizes.

All automation applications require external safety photocell protection / vehicle loop detector and appropriate warning signs and/or devices.

Imported and marketed in New Zealand by GATE DRIVE SOLUTIONS LTD.

www.gatedrivesolutions.co.nz Phone: 09 419 5483

The Information contained in this document is subject to change without notice. June 2018